



Adelaide Annexe & Canvas

"experience is

Adelaide Annexe & Canvas Pty Ltd

39-47 West Thebarton Road, Thebarton SA 5031

Ph: 08 8357 4444

Website: www.adelaideannexe.com.au

Fax: 08 8357 4447

Email: sales@adelaideannexe.com.au

HOIST COVERS

Info and Measure Booklet



Also Suppliers of

CARAVAN ANNEXES
ROLL OUT AWNING WALLS
SUNBLOCK MESH WALLS

BLINDS & AWNINGS
TENTS & BEACH SHADES
GENERAL CANVAS WORK
STRAPS & RECOVERY GEAR

Hoist Cover Information

"experience is what you need"

DETAILS

Please note : Hoist Covers are custom made and need to be carefully measured. The onus is on the customer to measure correctly and to accept liability for any problems due to measuring mistakes. (see back page for full Product Liability Information). If you are not confident to take these measurements, we suggest to contact your local canvas goods manufacturer and enquire if they can measure and manufacture a custom cover.

MATERIAL - 12/15oz AUSTRALIAN MADE CANVAS (plain colours or striped)

FASTENINGS - STRAPS ONTO END OF EACH ARM and VELCRO LOOPS ONTO OUTSIDE LINE

CONSTRUCTION - DIAGONAL SEAMS DOUBLE STITCHED

SEAT BELT WEBBING AROUND PERIMETER

150mm STRAIGHT VALANCE AROUND EDGE

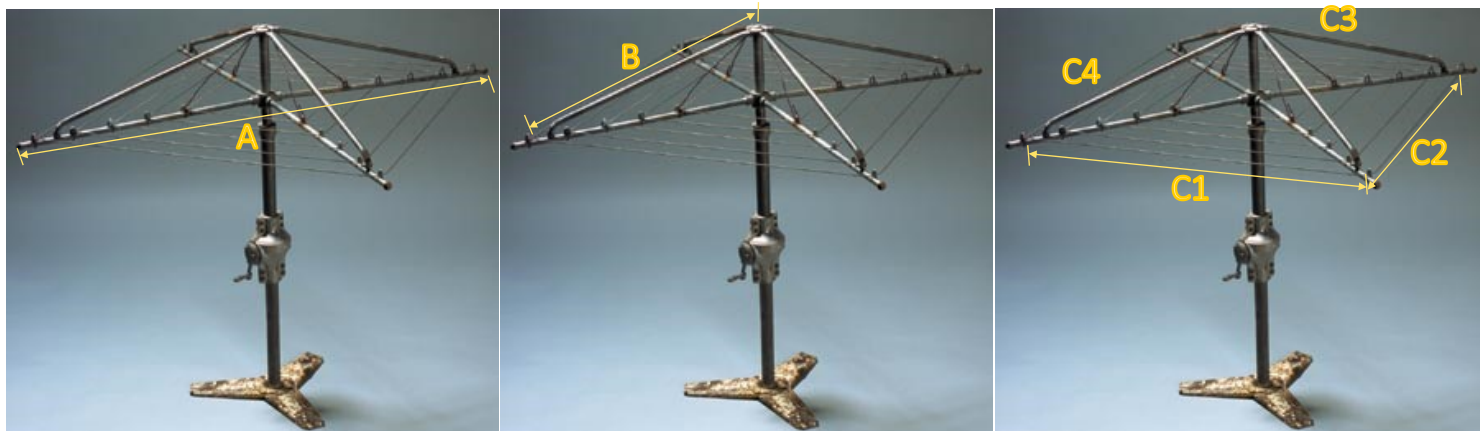


PRICING (all prices include GST)

SMALL (diagonal A less than 3600mm)	\$770
MEDIUM (diagonal A 3600mm to 4800mm)	\$860
LARGE (diagonal A greater than 4800mm)	\$990
EXTRA FOR 'OUT OF SQUARE' COVER	\$90
DELIVERY CHARGE (MELB—SYD—BRIS)	\$60
DELIVERY CHARGE (PERTH—HOBART—DARWIN)	\$85
PLEASE ENQUIRE FOR OTHER AREAS	

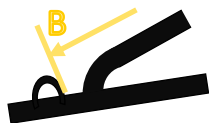
Measuring Information

"experience is what you need"



Measuring Instructions: **(not as complicated as it may look)**

1. measurement A is from the end of one horizontal arm to the end of the opposite arm (diagonally across the square) Please note that measurement A is not critical it is used to work out pricing and not used for manufacture ...
2. Measurement B is from the centre of the top of the centre pole to just inside the last wire holder on the horizontal arm (measure all four arms to make sure they are the same ...
(IMPORTANT ... you must measure from the exact centre of the top pole)



3. Measurement C is from the same place as B (just inside the last wire holder on the horizontal arm) and is measured to the same place on the next arm. Do this for all 4 sides (C1,C2,C3 and C4). These measurements are critical to the cover fitting well. If the arms are loose or wobbly then try not to move them while measuring.
4. You will now see from your four C measurements if the hoist is still square (most hoists get a little out of square over time) If the hoist is square (all C measurements are within 20mm of each other) then nothing more needs doing .
5. However if the measurements vary by more than 20mm then we need to investigate more. When you look carefully at each of the wires you should find that they are only connected to one arm and they just run through the wire holding loops on the other three arms. If this is the case then nothing more needs to be done . You will square the hoist up to the newly made hoist cover by tapping the three non connected arms around to line up with the corners on your new cover.
6. If you find that the wires have been replaced at some time and some are connected to different arms then squaring the hoist afterwards is not an option. In this case we need to make the cover to suit the out of square hoist. This will add an \$80 surcharge to the overall price.

(measuring helpline 0408 857 301 reasonable hours only please)

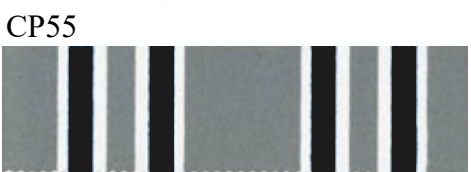
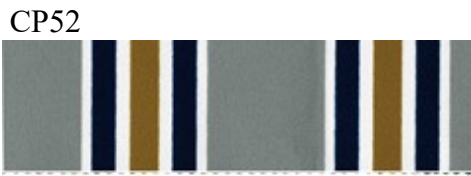
A _(mm)		C1 _(mm)	
B _(mm)		C2 _(mm)	
Colour or Pattern No.		C3 _(mm)	
		C4 _(mm)	

Terms and Conditions

"experience is what you need"

1. COVERS ARE DESIGNED FOR HILLS HOIST STYLE LINES ONLY
2. MATERIAL IS AUSTRALIAN MADE - PLAIN COLOURS (8 COLOURS TO CHOOSE FROM) or STRIPED PATTERNS (5 PATTERNS TO CHOOSE FROM)
3. MANUFACTURE TIME IS 3 WEEKS PLUS 1 WEEK FOR DELIVERY
4. DELIVERY IS TO A PHYSICAL ADDRESS ONLY NOT TO PO BOX
5. THE CUSTOMER TAKES RESPONSIBILITY FOR CORRECT MEASUREMENTS
6. PAYMENT IS REQUIRED AT THE TIME OF ORDERING
7. 12 MONTH WARRANTY ON MATERIALS AND WORKMANSHIP (return goods to factory for any warranty enquiries)

STRIPES (grey backed)



PLAINS (same both sides)

